

# Portable Continuous Motor Monitoring CM3000

## Benefits

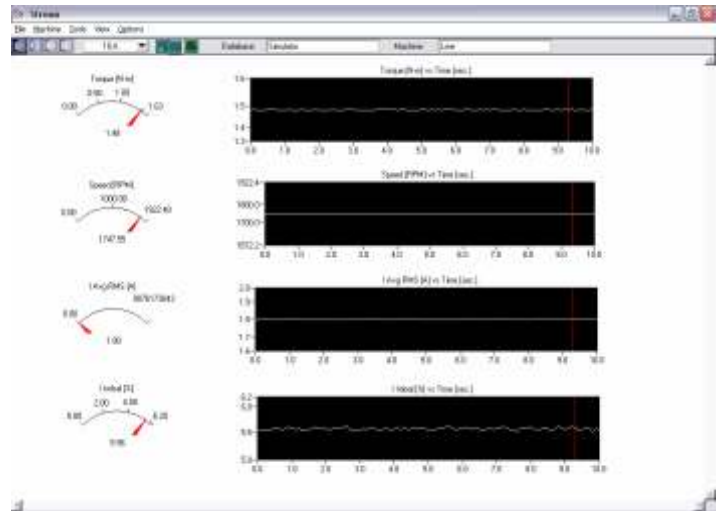
Annoyed by receiving that call at 2:00 A.M. Avoid costly overtime and frustration when diagnosing intermittent problems with the New CM3000 Software.

Real Time Continuous Acquisition of the following parameters across the line or on a VFD.

- TORQUE
- SPEED
- LOAD
- FREQUENCY
- V OVER F
- IA RMS (A)
- IB RMS (A)
- IC RMS (A)
- VA RMS (V)
- VB RMS (V)
- VC RMS (V)
- I AVG RMS (A)
- V AVG RMS (V)
- I UNBAL (%)
- V UNBAL (%)
- IA ANGLE (DEG)
- IB ANGLE (DEG)
- IC ANGLE (DEG)
- VA ANGLE (DEG)
- VB ANGLE (DEG)
- VC ANGLE (DEG)
- ZA ANGLE (DEG)
- ZB ANGLE (DEG)
- ZC ANGLE (DEG)
- Z ANGLE AVG (DEG)
- POWER A (KW)
- POWER B (KW)
- POWER C (KW)
- TOTAL POWER (KW)
- PF
- APARENT POWER
- REACTIVE POWER

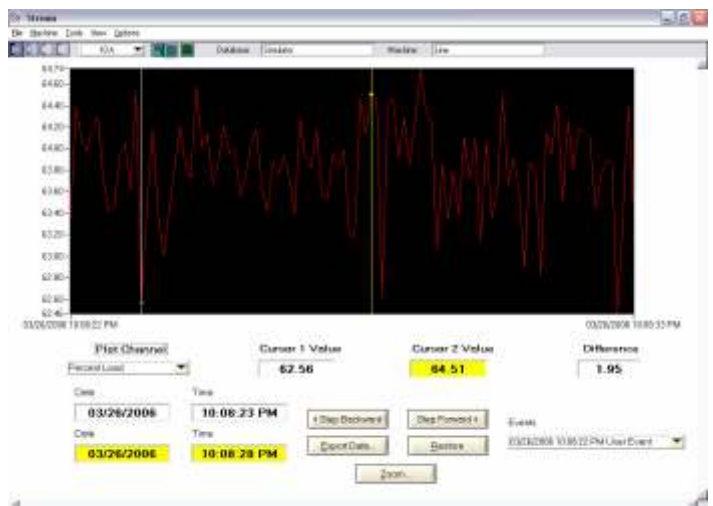
## Customized Views:

The CM3000 Software is highly customizable, allowing the user to view only the values that are chosen.



## Recording and Analyzing Data

Record all data for a month or trigger on an event.



Baker Instrument Company, an SKF Group Company  
4812 McMurry Avenue  
Fort Collins, CO 80525  
970/282-1200 - 800/752-8272 - 970/282-1010 FAX  
www.bakerinst.com